



# OFFICE SPACE For Lease



**30+ ON SITE PARKING SPOTS!**



**888 Glenbrook Avenue,  
Bryn Mawr PA, 19010**

**Available: February 1st 2025  
2,800 sf. +/-**

- Newly renovated office building.
- One block from Bryn Mawr Hospital.
- Elevator/ADA compliant.
- Walking distance to R-100 train station.
- WAWA and 7-Eleven withing walking distance.

### Contact information:

**Stuart Dessner**

President

C: 610.308.7300

W: 610.668.1733

sd@primemainline.com

**Alexi Chumley**

Associate

C: 610.500.0000

W: 610.668.1733

ac@primemainline.com

[www.primerealtysearch.com](http://www.primerealtysearch.com)

No warranty or misrepresentation, expressed or implied, is made as to the accuracy of the information contained herein, and same is submitted subject to errors, omissions, change of price, rental or other conditions, withdrawal without notice, and to any special listing conditions, imposed by our principles.



**Contact information:**

Stuart Dessner

Alexi Chumley

President

Associate

C: 610.308.7300

C: 610.500.0000

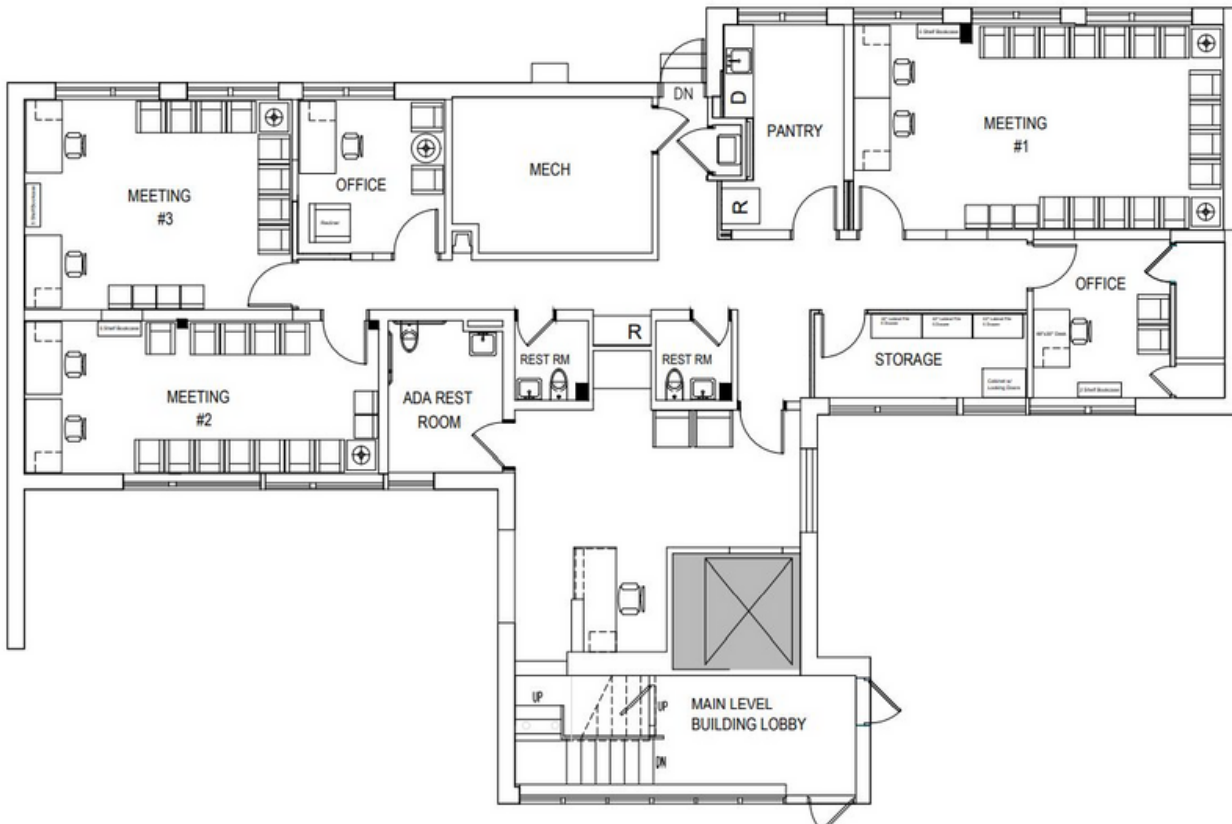
W: 610.668.1733

W: 610.668.1733

sd@primemainline.com

ac@primemainline.com

[www.primerealtysearch.com](http://www.primerealtysearch.com)



No warranty or misrepresentation, expressed or implied, is made as to the accuracy of the information contained herein, and same is submitted subject to errors, omissions, change of price, rental or other conditions, withdrawal without notice, and to any special listing conditions, imposed by our principles.