



Office Space Available

111 Sibley Avenue

Armory, PA 19003



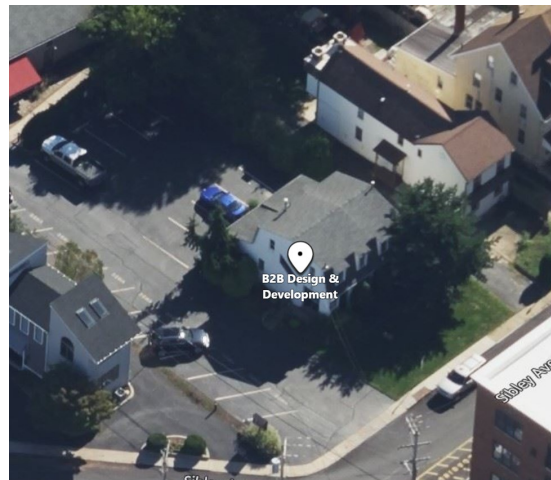
For Lease

Available Space:

0 +/- SF

Property Details:

- Prime office location.
- Located across the street from Ardmore Farmers Market and Trader Joes.
- 2nd floor offices.
- Walk to Ardmore R5 train and Septa bus.
- Onsite parking.
- Located next to Suburban Square.



Contact information:

Stuart Dessner

President

C: 610.308.7300

W: 610.668.1733

sd@primemainline.com

Alexi Chumley

Associate

C: 610.500.0000

W: 610.668.1733

ac@primemainline.com

www.primerealtysearch.com



No warranty or misrepresentation, expressed or implied, is made as to the accuracy of the information contained herein, and same is submitted subject to errors, omissions, change of price, rental or other conditions, withdrawal without notice, and to any special listing conditions, imposed by our principles.



111 Sibley Avenue
Ardmore, PA 19003

For Lease



Contact Information:

Stuart Dessner

President

C: 610.308.7300

W: 610.668.1733

sd@primemainline.com

Alexi Chumley

Associate

C: 610.500.0000

W: 610.668.1733

ac@primemainline.com

www.primerealtysearch.com



No warranty or misrepresentation, expressed or implied, is made as to the accuracy of the information contained herein, and same is submitted subject to errors, omissions, change of price, rental or other conditions, withdrawal without notice, and to any special listing conditions, imposed by our principles.