



Office Space Available

28 Garrett Avenue

Bryn Mawr, PA 19010



For Lease

Available Space:

1,000 +/- SF First Floor

Property Details:

- Located just off Lancaster Avenue
- Within walking distance to Rosemont R5 train station
- Signage available
- Onsite parking



Contact information:

Stuart Dessner

President

C: 610.308.7300

W: 610.668.1733

sd@primemainline.com

Alexi Chumley

Associate

C: 610.500.0000

W: 610.668.1733

ac@primemainline.com



www.primerealtysearch.com

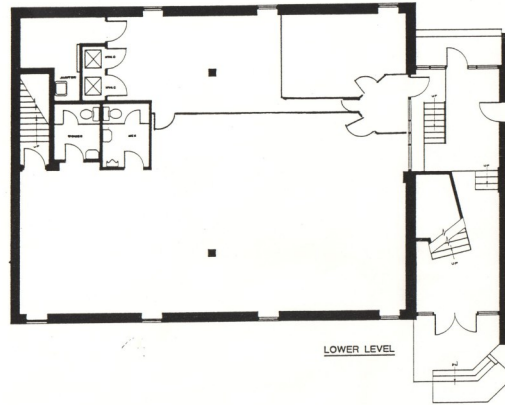
No warranty or misrepresentation, expressed or implied, is made as to the accuracy of the information contained herein, and same is submitted subject to errors, omissions, change of price, rental or other conditions, withdrawal without notice, and to any special listing conditions, imposed by our principles.

Prime Realty Group, inc. 822 Montgomery Avenue, Narberth, PA 19072



28 Garrett Avenue
Bryn Mawr, PA 19010

For Lease



Contact Information:

Stuart Dessner

President

C: 610.308.7300

W: 610.668.1733

sd@primemainline.com

Alexi Chumley

Associate

C: 610.500.0000

W: 610.668.1733

ac@primemainline.com

www.primerealtysearch.com



No warranty or misrepresentation, expressed or implied, is made as to the accuracy of the information contained herein, and same is submitted subject to errors, omissions, change of price, rental or other conditions, withdrawal without notice, and to any special listing conditions, imposed by our principles.