



# COMMERCIAL SPACE For Lease

**GREAT SIGNAGE!**



**814 Montgomery Avenue,  
Narberth PA, 19072**

**Available Space: 2,100 sf. +/-  
(First Floor)**

- Pylon Signage located on busy Montgomery Avenue.
- Ample on site parking.
- 1st floor office space.
- RE Taxes: \$7,353.
- Walk to Bus, WAWA, Staples and ACME.
- Great office or medical space use.

## Contact information:

**Stuart Dessner**

President

C: 610.308.7300

W: 610.668.1733

sd@primemainline.com

**Alexi Chumley**

Associate

C: 610.500.0000

W: 610.668.1733

ac@primemainline.com

[www.primerealtysearch.com](http://www.primerealtysearch.com)

No warranty or misrepresentation, expressed or implied, is made as to the accuracy of the information contained herein, and same is submitted subject to errors, omissions, change of price, rental or other conditions, withdrawal without notice, and to any special listing conditions, imposed by our principles.

**Contact information:**

Stuart Dessner

Alexi Chumley

President

Associate

C: 610.308.7300

C: 610.500.0000

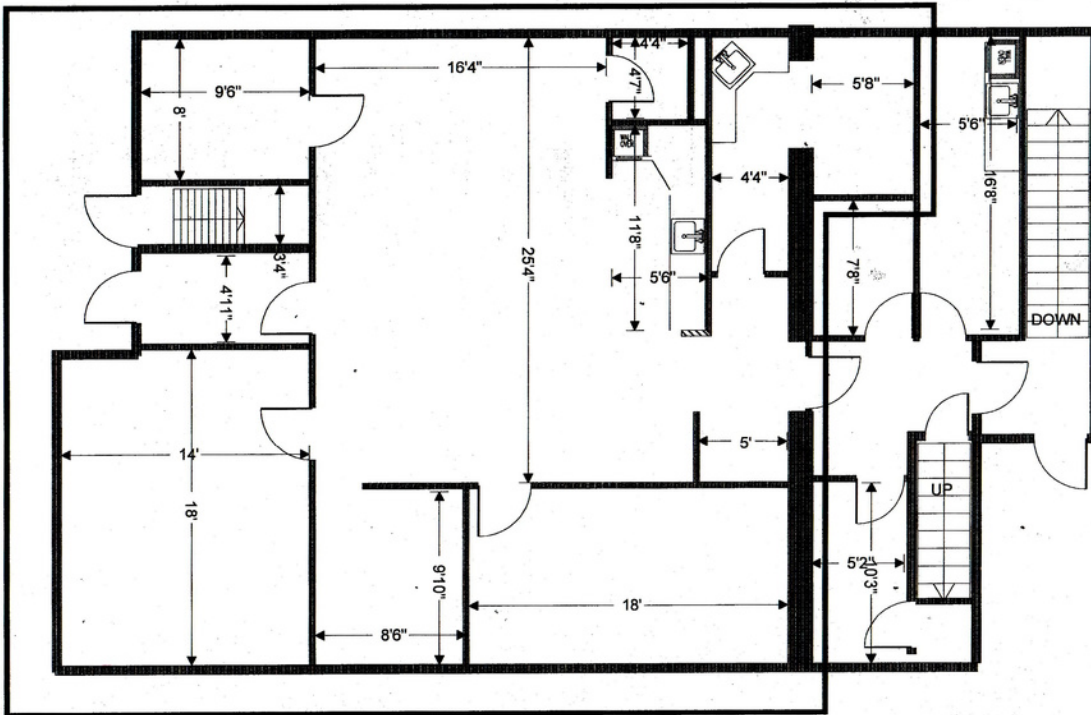
W: 610.668.1733

W: 610.668.1733

sd@primemainline.com

ac@primemainline.com

[www.primerealtysearch.com](http://www.primerealtysearch.com)



No warranty or misrepresentation, expressed or implied, is made as to the accuracy of the information contained herein, and same is submitted subject to errors, omissions, change of price, rental or other conditions, withdrawal without notice, and to any special listing conditions, imposed by our principles.